



MONTHLY MEMBERSHIP PROGRESS REPORT

District 325B2

Results as of: 6/30/2017

GMT: OPEN

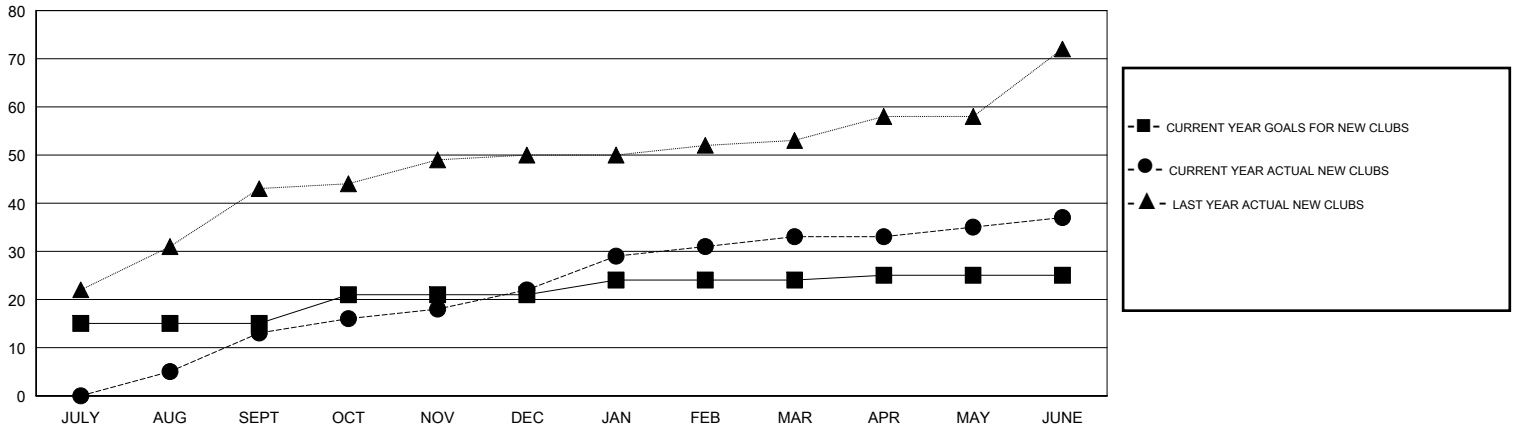
LOCATION NEPAL

GMT CA

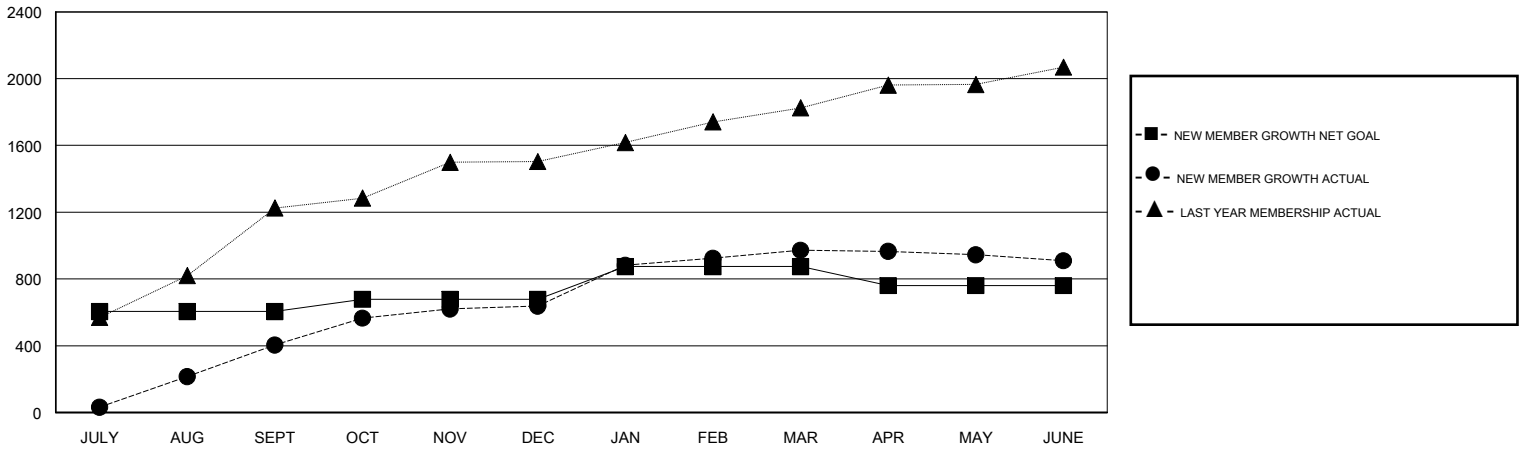
Clubs			
RESULTS FOR 2016-2017			
QUARTER	NEW CLUB GOAL	NEW CLUBS	DROPPED CLUBS
JULY/AUG/SEPT	15	13	1
OCT/NOV/DEC	6	9	2
JAN/FEB/MAR	3	11	2
APR/MAY/JUNE	1	4	11

Members			
RESULTS FOR 2016-2017			
QUARTER	NEW MEMBER GROWTH NET GOAL (not reinstated or transfers)	NEW MEMBER GROWTH ACTUAL (not reinstated or transfers)	DROPPED MEMBERS ACTUAL (including transfers)
JULY/AUG/SEPT	605	607	203
OCT/NOV/DEC	73	517	284
JAN/FEB/MAR	196	536	201
APR/MAY/JUNE	-114	442	505

GOALS AND ACTUAL NEW CLUBS CUMULATIVE



GOALS AND ACTUAL MEMBERS CUMULATIVE



DROPPED CLUBS: 16	225 CLUBS OF 308 ADDED 1 OR MORE NEW MEMBERS	GENDER DISTRIBUTION
		MALE 6,389 (80.34%)
		FEMALE 1,563 (19.66%)
DROPPED MEMBERS	CLICK HERE FOR CUMULATIVE MEMBERSHIP DATA	TOTAL FAMILY UNIT MEMBERS 4,033
DECEASED 11		FAMILY MEMBERS PAYING HALF DUES 2,450
CLUB CANCELLED 220		
OTHER 962		
TOTAL 1,193		